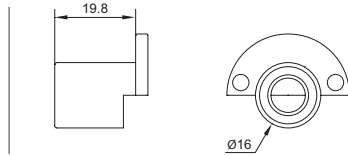
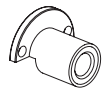


Insert
Socket

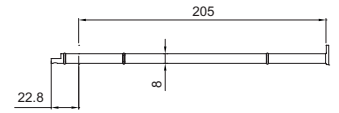


• Réf / Art. no. DOTINSER

Support pour tablette verre 6 mm
Brackets for 6-mm glass shelf

Profondeur / Standout: 205 mm

Charge maxi. / Safe load: 8 kg

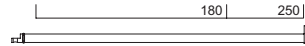
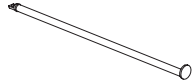


• Réf / Art. no. DOTTAB20

Bras droit
Straight arm

Profondeur / Standout: 180 / 250 mm

Charge maxi. / Safe load: 5 kg

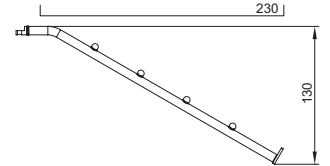
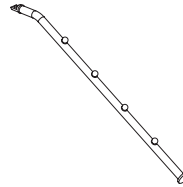


• Réf / Art. no. DOTBRO18 / DOTBRO25

Bras perroquet
Inclined arm

Profondeur / Standout: 230 mm

Charge maxi. / Safe load: 5 kg

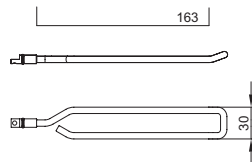
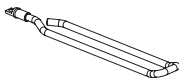


• Réf / Art. no. DOTPER25

Broche blister
Blister hook

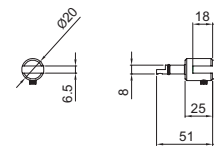
Profondeur / Standout: 163 mm

Charge maxi. / Safe load: 5 kg



• Réf / Art. no. DOTBLI15

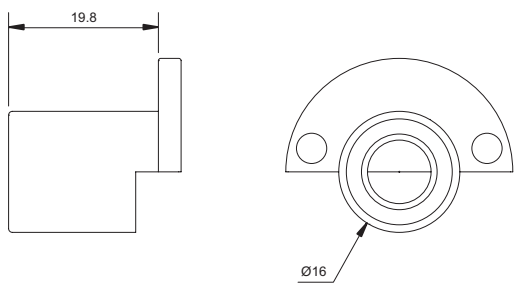
Pince pour tablette polycarbonate 6 mm
Grip bracket for polycarbonate shelf 6 mm



• Réf / Art. no. DOTPINCE

TECHNIQUE INSERT

SOCKET TECHNIQUE

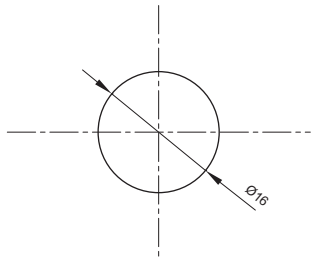


INSERT
Insert - réf : DOTINSERT

SOCKET
Socket - Art. no. DOTINSERT

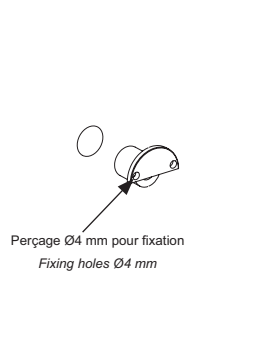
MISE EN ŒUVRE / INSTALLATION

Usinage
Machining



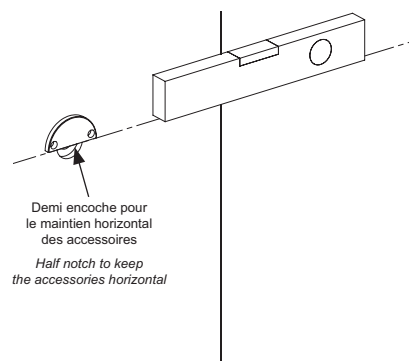
Perçage par mèche plate à bois Ø16 mm
Wood bit Ø16 mm

Pose de l'insert sur panneau bois
Fitting of socket to wood panel



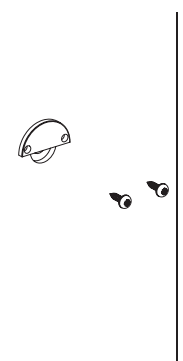
Perçage Ø4 mm pour fixation
Fixing holes Ø4 mm

1 - Mettre en place l'insert dans le perçage Ø16 mm, demi lune en haut.
Push the socket into the 16-mm hole



Demi encoche pour le maintien horizontal des accessoires
Half notch to keep the accessories horizontal

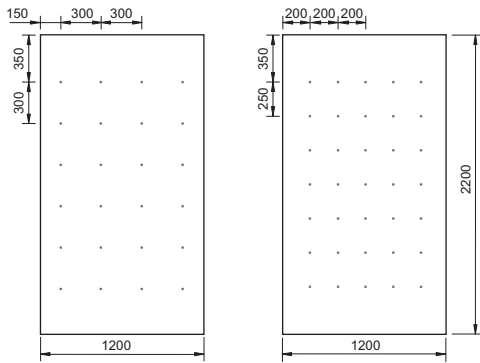
2 - Orienter l'insert pour qu'il soit bien positionné horizontalement.
Check level



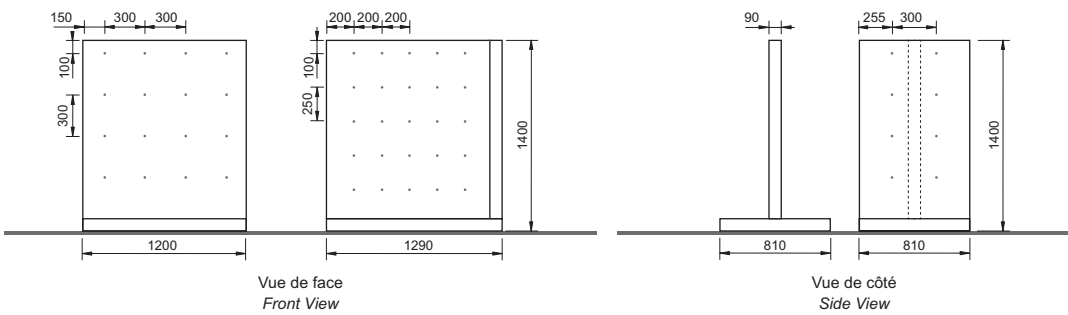
3 - Fixer l'insert avec deux vis VBA tête ronde.
Fix with 2 round-headed wood screws

RECOMMANDATIONS / RECOMMENDATIONS

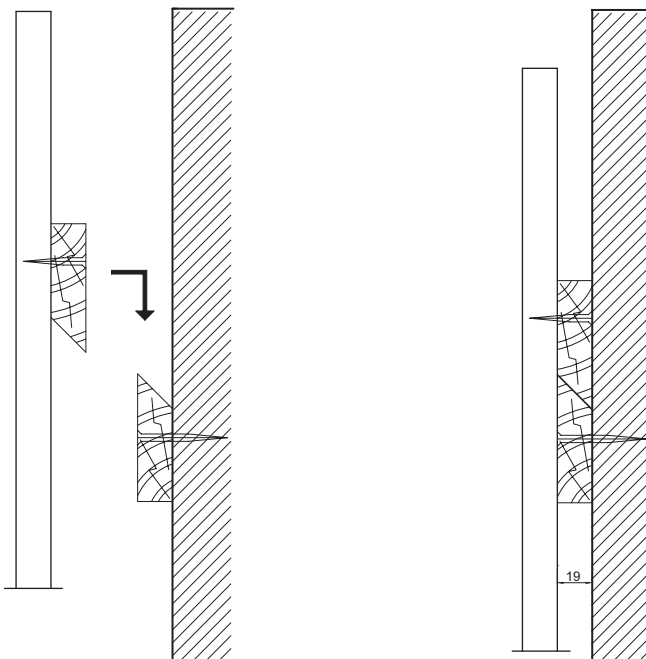
Calpinages muraux Wall patterns



Calpinages centraux Centre-floor patterns



Fixation du panneau Panel fixing



- 1 - Dans du panneau de 19 mm minimum, fabriquer des clés de dévêtissement. Les poser au dos du panneau et sur le mur.
Cut wedges as shown, minimum thickness 19 mm. Fix them to the wall and to the backside of the panel.

- 2 - Mettre en place le panneau sur les clés de dévêtissement posées préalablement.
Hang the panel on the wedges.