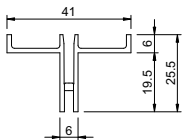
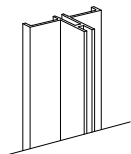


Crémaillère à encastrer par l'arrière

Slot channel sunk from behind

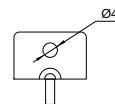
Longueur / Length: 1532 / 2013 / 2531 mm



• Réf / Art. no. **M1915 / M1920 / M1925**

Cabochon de finition pour crémaillère M19

Finishing end cap for slot channel M19



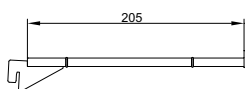
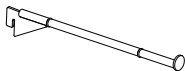
• Réf / Art. no. **CABM19**

Supports pour tablette verre 6 mm

Pair of brackets for 6-mm glass shelf

Profondeur / Standout: 205 mm

Charge maxi. / Safe load: 8 kg



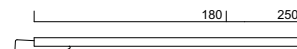
• Réf / Art. no. **DO2TAB20**

Bras droit

Straight arm

Profondeur / Standout: 180 / 250 mm

Charge maxi. / Safe load: 5 kg



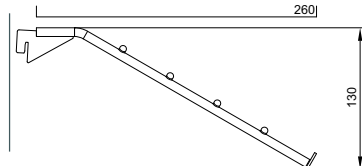
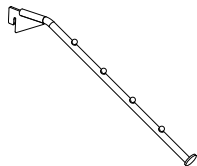
• Réf / Art. no. **DO2BR18 / DO2BR25**

Bras perroquet

Inclined arm

Profondeur / Standout: 260 mm

Charge maxi. / Safe load: 5 kg



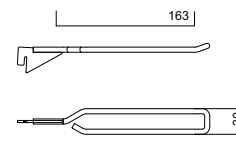
• Réf / Art. no. **DO2PER25**

Broche blister

Blister hook

Profondeur / Standout: 163 mm

Charge maxi. / Safe load: 5 kg

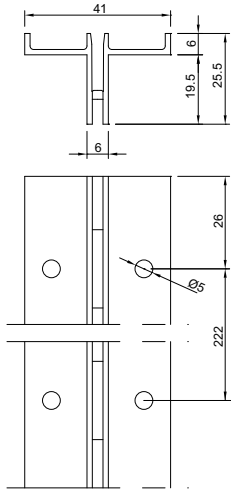


• Réf / Art. no. **DO2BLI15**

ATTENTION : La charge maximale est indiquée par tablette. Veuillez à toujours répartir la charge de façon homogène sur l'ensemble des supports ou des tablettes.
 ATTENTION: specified safe load per shelf. Loads must always be evenly distributed.

TECHNIQUE CRÉMAILLÈRE M19

SLOT CHANNEL M19 TECHNIQUE



CRÉMAILLÈRE

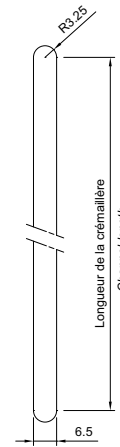
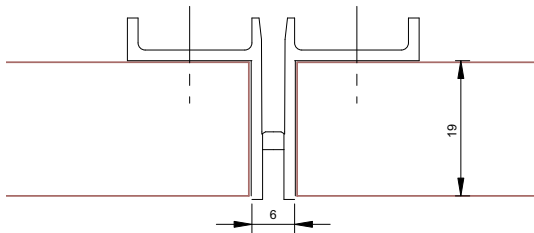
Crémaillère à encastrer par l'arrière - réf : M19

SLOT CHANNEL

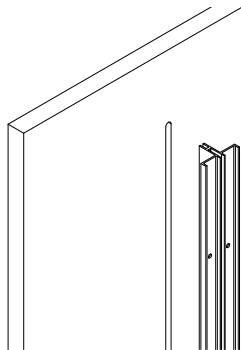
Slot channel sunk from behind - Art. no. M19

MISE EN ŒUVRE / INSTALLATION

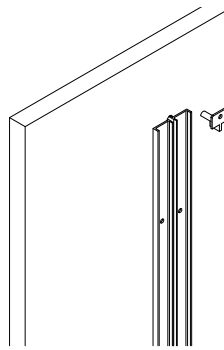
Usinage de la rainure arrêtée
Slot cutting



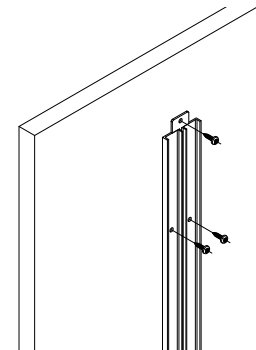
Pose de la crémaillère
Channel Installation



1 - Crémaillère M19.
Slot channel M19



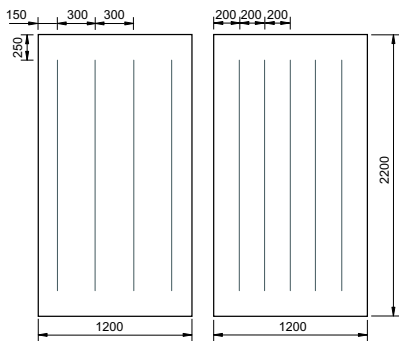
2 - Mise en place M19 et cabochon de finition.
Fitting of channel M19 & finishing end cap



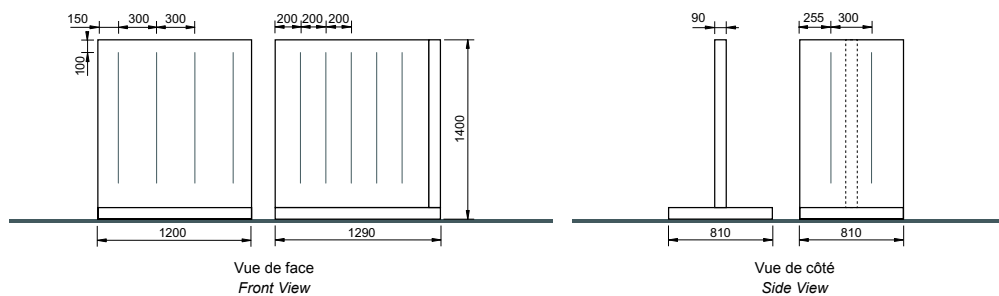
3 - Fixation M19 et cabochon.
Fixing of channel & end cap

RECOMMANDATIONS / RECOMMENDATIONS

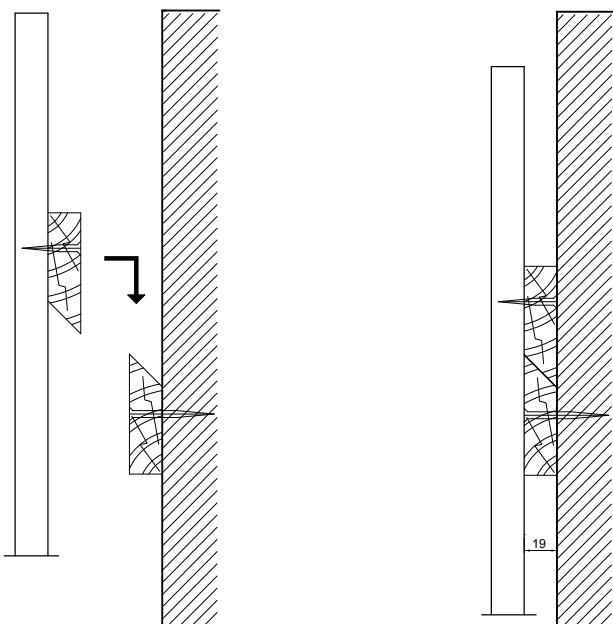
Calpinages muraux Wall patterns



Calpinages centraux Centre-floor patterns



Fixation du panneau Panel fixing



- 1 - Dans du panneau de 19 mm minimum, fabriquer des clés de dévissage. Les poser au dos du panneau et sur le mur.
Cut wedges as shown, minimum thickness 19 mm. Fix them to the wall and to the backside of the panel.

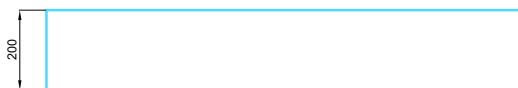
- 2 - Mettre en place le panneau sur les clés de dévissage posées préalablement.
Hang the panel on the wedges.

PRÉCONISATIONS POUR LES TABLETTES

RECOMMENDATIONS FOR SHELVES

Dimension tablette verre

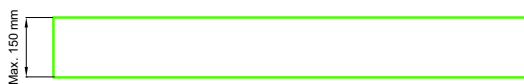
Glass shelf dimensions



Pour support tablette verre 200 mm DOTTAB20 et DOT2TABL
For 8 and 12-mm glass shelf brackets DOTTAB20 and DOT2TABL

Dimension tablette polycarbonate

Polycarbonate shelf dimensions



Pour support tablette polycarbonate DOTPINCE
For polycarbonate shelf bracket DOTPINCE

